

CERTIFICATE OF LOCATION OF GOVERNMENT CORNER

County of Anoka

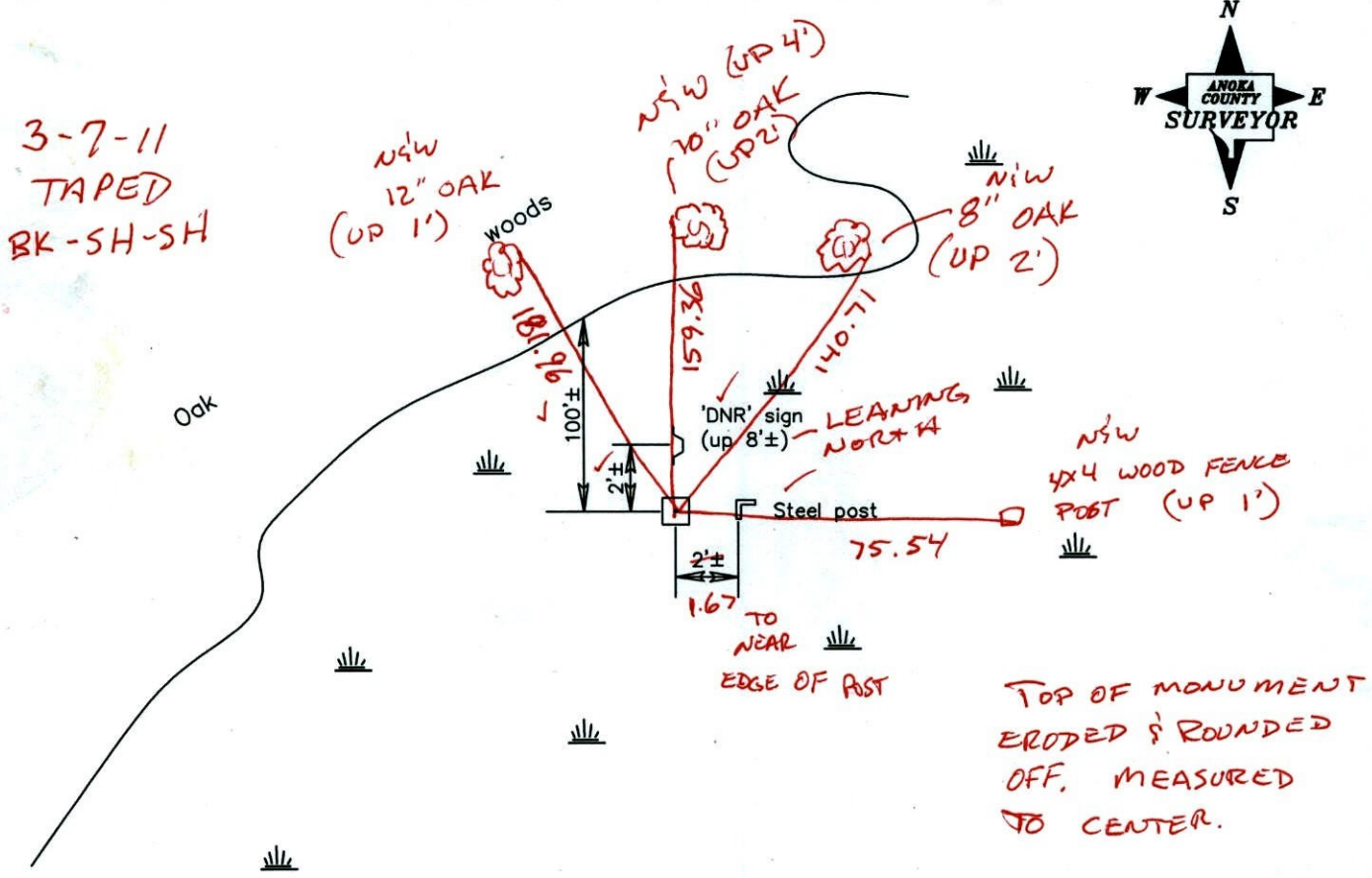
State of Minnesota

East 1/4 Corner of Sec. 25 Township 32 Range 23

I hereby certify that on the 30th day of April, 1965, I found the described corner which was evidenced by a concrete monument

and I further certify that to perpetuate the location of said corner, I did, at the exact location thereof, place a permanent marker consisting of the concrete monument with a DNR sign and post on the north side (DOWN 0.4' FROM TOP OF ICE)

which reference or witness monuments are located in the manner following:



Revised date

| |
|---------|
| 2/11/94 |
| 3/05/02 |
| |
| |

N.A.D. 1983 Coordinates
(1996 adjustment)

| County Project Coordinates | State Plane Coordinates |
|-----------------------------|-------------------------|
| Northing <u>172023.1936</u> | Y _____ |
| Easting <u>532001.5704</u> | X _____ |

Date 3/05/02

CERTIFICATE OF LOCATION OF GOVERNMENT CORNER

County of Anoka

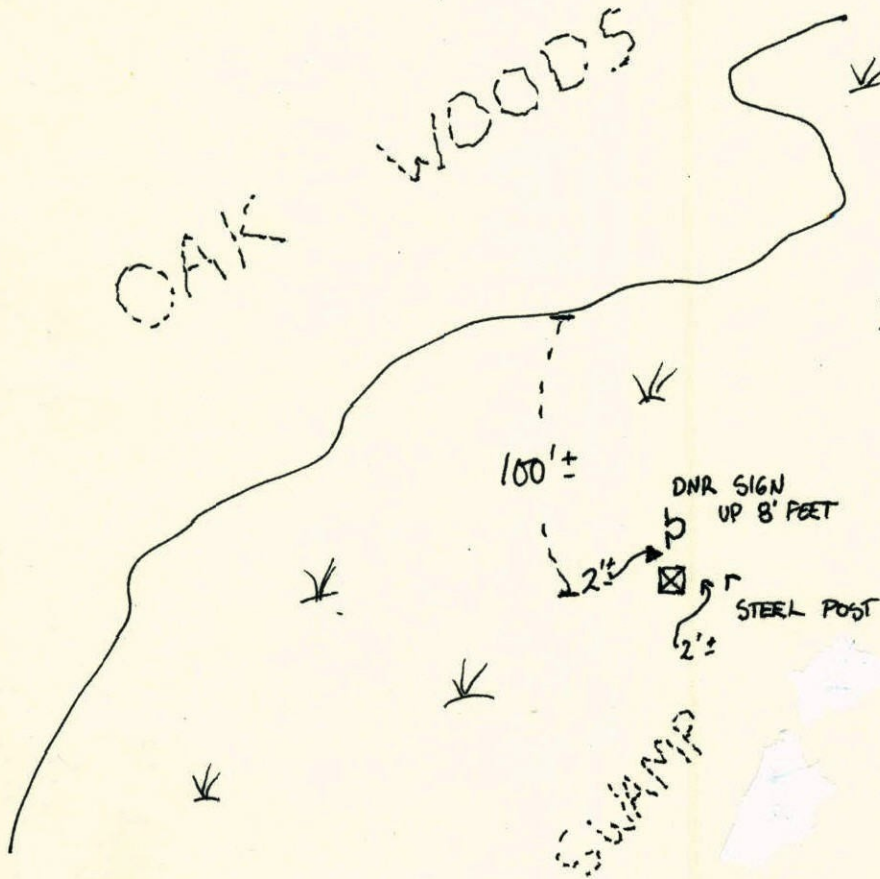
State of Minnesota

EAST 1/4 Corner of Sec. 25 Township 32 Range 23

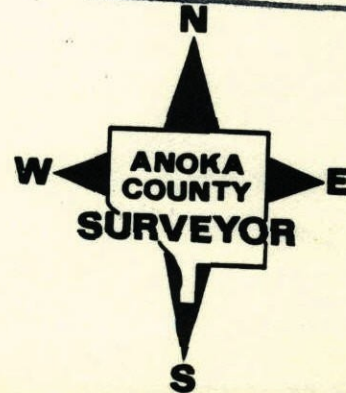
I hereby certify that on the 30th day of APRIL, 19 65, I found the described corner which was evidenced by CONCRETE MONUMENT

and I further certify that to perpetuate the location of said corner, I did, at the exact location thereof, place a permanent marker consisting of CONCRETE MONUMENT (STEEL POST & DNR SIGN ON NTH SIDE)

which reference or witness monuments are located in the manner following:



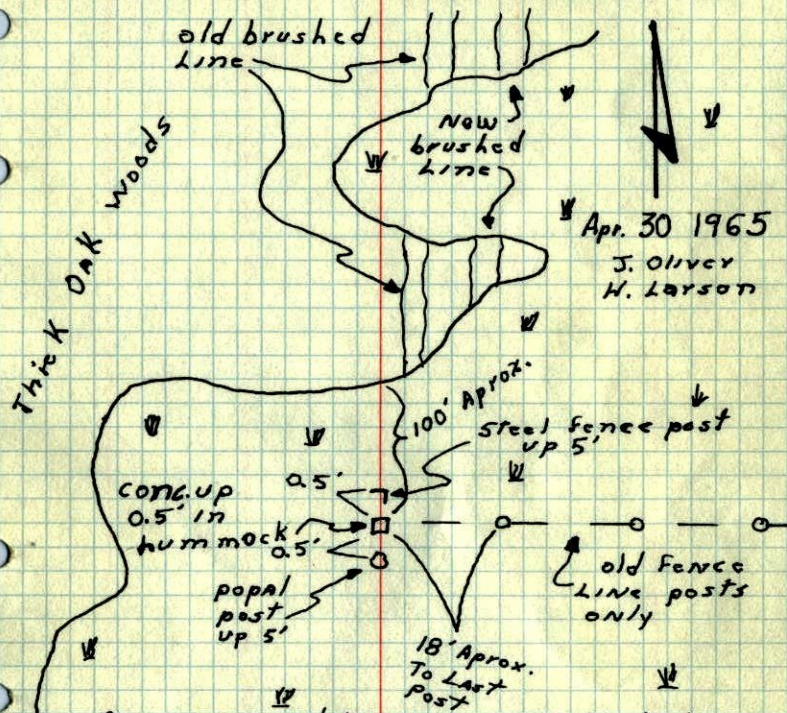
| | | |
|--------------------------|---------|--------------------|
| N.A.D. | 1983 | Co-ordinates |
| County | Project | Co-ordinates |
| Northing | | <u>172023.1936</u> |
| Easting | | <u>532001.5704</u> |
| State Plane Co-ordinates | | |
| Y | | _____ |
| X | | _____ |
| Date _____ | | |



| Revised date | Revised date | Revised date |
|----------------|--------------|--------------|
| <u>2-11-94</u> | | |
| <u>3-5-02</u> | | |
| | | |
| | | |
| | | |
| | | |

E 1/4 Cor. Sec. 25 T32 R23

Found 4" Sq. concrete monument
Leaning To one side in deep swamp.
Straightened and set steel fence post
on north side. ~~can tie in winter~~



Apr. 30 1965
J. Oliver
H. Larson

Corner was Wet
June 22, 1971
R. Bryn
J. Boettcher
D. Vensas.

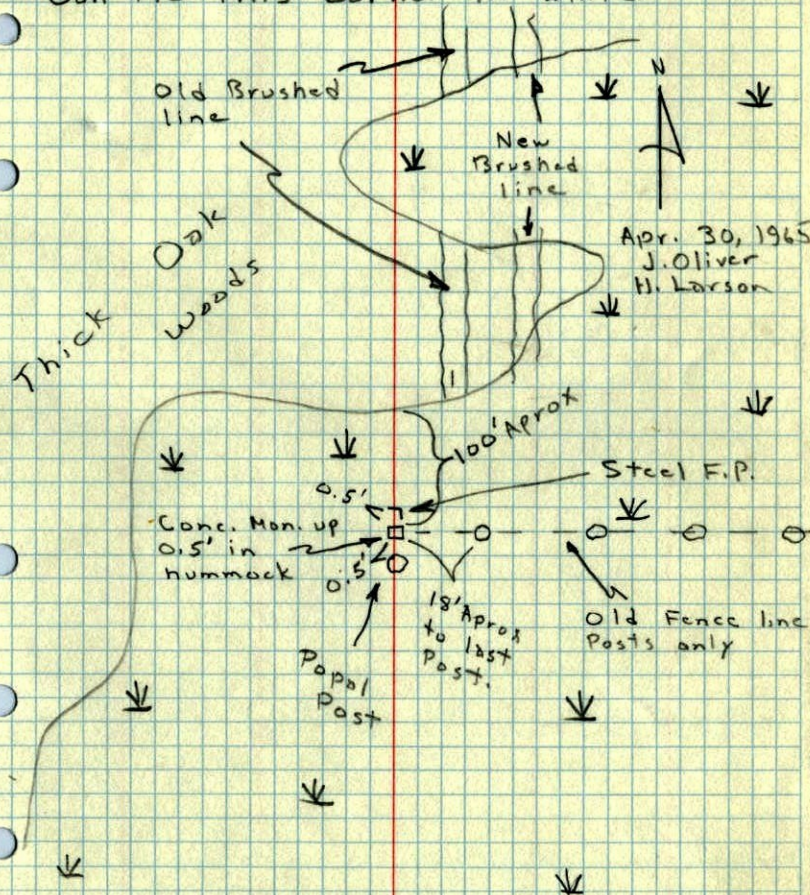
checked
1-22-74
H. Larson

TEMPERATURE CORRECTED
AND HORIZONTALLY
TAPED MEASUREMENTS

ROLAND W. ANDERSON
COUNTY SURVEYOR
ANOKA COUNTY, MINNESOTA

E 1/4 Cor. Sec. 25, T32, R23

Found 4" Sq. Concrete Monument leaning
to one side in deep Swamp. Straightened
and Set Steel Fence Post on No. Side.
Can tie this corner in winter



Apr. 30, 1965
J. Oliver
H. Larson